

# Oro



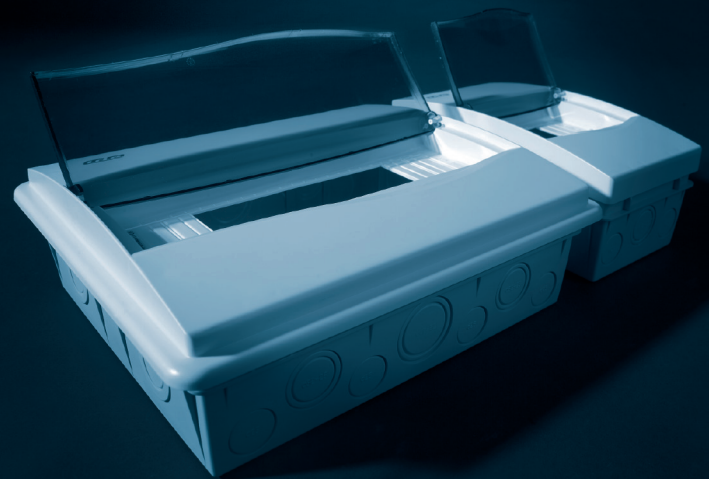
ORO Series of flush-fit distribution enclosures are supplied with transparent (UV protected) or opaque windows with vertical opening and an ergonomic design.

**They are made from halogen free long-lasting plastic material.** The cover can be clipped onto the base or fixed with screws. The DIN rail is mounted without screws while on the 24 and 36 modules units a stretcher is incorporated to facilitate its adjustment.

The base incorporates easy-breaking pre-moulded slots for cable entry (metric system), as well as on the sides allowing side by side wiring of the enclosures. Reinforced cores on the back of the bases confer more strength to the enclosure

Also, all of them are prepared for installation of earth and neutral bars.

## ■ FLUSH-FIT DISTRIBUTION ENCLOSURES



## TECHNICAL DATA

■ degree of protection	IP40
■ resistance to impact	IK08
■ auto-extinguishing degree	HB (UL94)
■ test of resistance to glow wire	650° C
■ ball pressure test	70° C

*According to 2006/95/CE directive and EN 60439-1 and UNE-EN 60439-3 norms on affected parts.*